

Nashville Arts

June 2013

MAGAZINE

BORED...
PAINT THE
TOWN RED!





Field Notes

A Local Look at Global Art

Emma Hack

by Betsy Wills

Back in 1986, I reported to Art History 101 at Vanderbilt University. Professor Fryd flashed up a slide of the Grand Canyon. She prompted the class by asking, “What do you think of this scene?” Hands flew up and adjectives such as awe-inspiring, beautiful, breathtaking, and spectacular bounced about the room. Next, she challenged us by saying, “What words do you think first came to mind for the early pioneers when they encountered this giant chasm and realized they were going to have to cross it with all of those wagons? I can imagine a few, and they aren’t pretty.”

It is hard to be a confident buyer of “new” or “emerging” art because often we are encountering it for the first time. It takes effort to get to know a work, similar to making a friend. The more you are exposed to it, the more comfortable you become in the decision to invite it into your living room for an extended stay above your sofa.

The opportunity to learn and become comfortable with an artist’s work has never been greater. Wonderful galleries abound here in Nashville where you can visit and learn. The Internet and magazines like the one you are reading allow you to consider works further



at your leisure. Moreover, we are urged within the social graph to “curate” using sites like Pinterest and Instagram. Whatever your fancy, a community of shared “likers” awaits you.

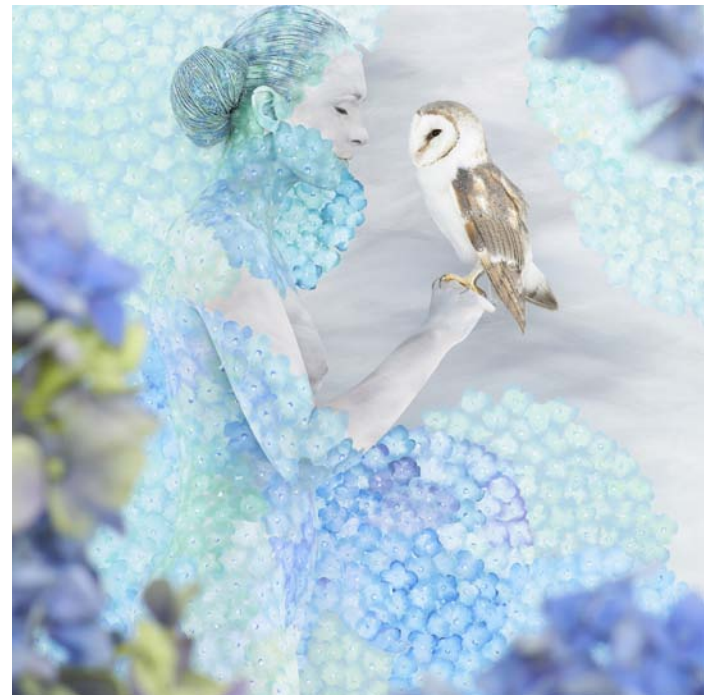


Betsy Wills admits that she is blissfully ignorant when it comes to art curation and selection. She is, however, an avid art lover and collector and maintains the popular art blog artstormer.com. Wills is proud of the fact that her art does not match her sofa.



In this column, I will present some artists with whom I have become familiar over the past several years. Australian genius Emma Hack jumped right out of the background to become my first feature. Her photographs are really art in two forms. Her female subjects are beautifully body painted to blend seamlessly into the canvas, which she also creates. The resulting effect is inspiration for both a redecorating effort and a *diet*. Gorgeous! ✓

For more about Emma Hack visit www.emmahackartist.com.



Award-winning body illustrator, visual artist, and photographer Emma Hack has built her career over the past twenty years and established her reputation as a highly skilled commercial and conceptual artist. Born and raised in Australia, Hack has painted celebrities and models from around the world onto her signature patterned walls and photographed the installations once complete.

Her work bridges art and design and invites voyeurism. The *Wallpaper* series of 2005, 2007, and 2008 feature Hack's interpretations of noted designer Florence Broadhurst's wallpaper drawings. In 2009 she developed the *Native Mandala* collection, which featured wildlife and nature from Australia. Other series such as *Blue and White* and *Treasured Tiles* compare and contrast global design. By focusing on common colors, images, and forms from various cultures around the world, Hack encourages us to consider how connected and defined those cultures are. Hack has created documentaries about her *Wallpaper* collection, *Native Mandala* series, and her charity project spurred by her art for the music video for Gotye's "Somebody That I Used To Know." See the music video on www.nashvillearts.com.